



# MC20

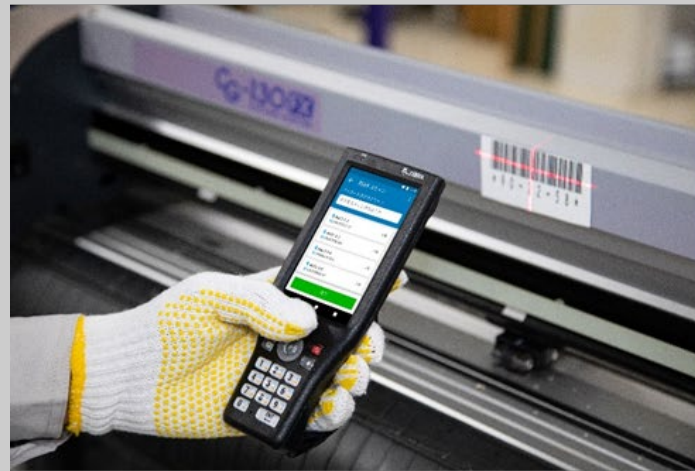
## Configuration & Accessories Guide

August 24, 2021

# Contents

I. MC20 Series Configuration Guide

II. MC20 Series Accessories Guide



# MC20

## Configuration Guide



# MC20 Configuration Matrix

Configuration Options	MC20XX	Option	Description
Wireless Option	MC200 <b>A</b> -XXXXXXXX	A	WLAN: 802.11a/b/g/n/d/h/i/k/r/ac, BT 5.0 with NFC, 1x1 MU-MIMO, Sensors
Operating System Options	MC200X- <b>G</b> XXXXXXXX MC200X- <b>N</b> XXXXXXXX	G N	Android GMS Android AOSP (Non-GMS)
Data Capture	MC200X-X <b>A</b> XXXXXXXX	A	SE4770 Imager (Standard Range)
Keypad Option	MC200X-XX <b>2</b> XXXXX	2	21 key (Numeric + FN)
Battery	MC200X-XXX <b>S</b> XXXX	S	Standard (3500mAh; typical capacity)
Memory	MC200X-XXXX <b>4</b> XXX	4	4GB RAM   64GB Flash
Future Place Holder	MC200X-XXXXX <b>0</b> XX	0	Empty Place Holder
Country	MC2XXX-XXXXXX <b>JP</b>	JP	Japan

# MC20

## Accessory Guide

# Cradle System

## Single Slot Cradle



### RZ-2CH9B



### RZ-2CH10



### Single Slot Cradle Options:

#### **RZ-2CH9B**

Single slot charges **only** cradle allows the charge of a single device. Does not provide a separate charge slot for spare battery.

#### **RZ-2CH10**

Single slot charge cradle with USB & Ethernet communication. Allows USB or Ethernet communication to the device. Comes with USB Type-A to USB Type-B cable for communication with host device. Does not provide a separate charge slot for spare battery.

**Requires:** Power supply **EA-70S** with AC cord is required for both single slot cradle options

### Additional Accessories for Single Slot Cradle



#### **EA-70S**

AC/DC power supply for single slot cradles, comes with AC power cord

**AC Input:** 100-240VAC,

**DC Output:** 5VDC, 2A, 10W

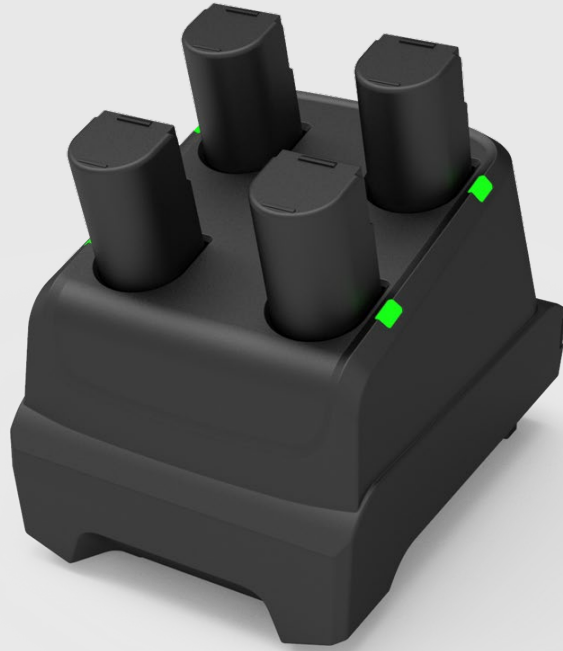


#### **25-64396-01R**

USB Type-A to USB Type-B replacement cable. Allows device to communication with host device over USB.

# Cradle System

## Multi-slot Battery Charger



### Multi-Slot Battery Charger:

**SACMC204SCHG01**

4-Slot Battery Charger, Charges Four Spare Batteries

**Multi-Slot Battery Cradle Requires:** Power supply **PWR-BGA12V50W0WW**, DC cord **CBL-DC-388A1-01** and **50-16000-218R** Japan AC Line Cord

## Main Features

- Charge only configurations
- Charges four spare batteries
- Compatible with MC20/RZ-H270 series batteries

### Additional Accessories for Single Slot Cradle



**PWR-BGA12V50W0WW**

Level VI AC/DC power supply (brick, replacement for PWR-14000-148R)

**AC Input:** 100-240VAC, 2.4A

**DC Output:** 12VDC, 4.16A, 50W

**Requires:** DC line cord and country specific grounded AC line cord.



**CBL-DC-388A1-01**

DC line cord for running the single slot cradles or battery chargers from a single Level VI power supply PWR-BGA12V50W0WW, Level VI replacement for PWR-14000-148R.



**50-16000-218R**

AC Line Cord, 1.8M, grounded, three wire, NEMA 1-15P plug. Associated Country: Japan

# Cradle System

## Multi-slot Cradles



### Multi-Slot Cradle Option:

#### **DCCS25E**

5-Slot terminal charge cradle with integrated power supply & AC power cord

## Main Features

- Charge only configurations
- Charges up to five devices
- Can be daisy chained to connect up to **four** 5-slot cradles
- Comes with integrated power supply & AC power cord

# Batteries



## Spare Battery – Standard Capacity



#### **BTRYMC2035MA01**

PowerPrecision Lithium-Ion battery pack, **3500mAh**, provides 20+ hours of use at room temperature before requiring a recharge



# Soft Goods

## Hand Strap

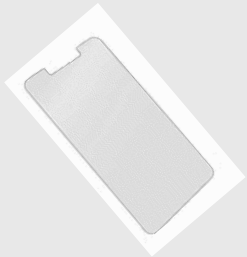


### SGMC20HDST01

Replacement hand strap, allows to attach and store a stylus with coiled tether (Qty. 1)

Order Stylus Separately: SG-TC7X-STYLUS-03

## Other Accessories



### MISCMC20SCPR01

Tempered glass screen protector (Qty. 3)



### SG-TC7X-STYLUS-03

Stylus with coiled tether (Qty. 3). Made of conductive carbon-filled plastic material, optimized for enterprise durability.

# Audio Accessories

## Wired Headsets



### MHDST-35MM-PTT1-01

Wired Headset (3.5mm; Standard Jack) For Push-To-Talk (PTT) and VoIP telephony



### HS2100-OTH

HS2100 Rugged Wired Headset Over-The-Head Headband includes HS2100 Boom Module and HSX100 OTH Headband Module

**Requires:** CBL-HS2100-3MS1-01; HS2100 Standard Cable (3.5mm Jack)

## Bluetooth Headsets



### HS3100-OTH

HS3100 Rugged Bluetooth headset with over-the-head headband. Includes boom and headband module.



### HS3100-BTN-L

HS3100 Rugged Bluetooth headset with behind-the-neck headband (left). Includes boom and headband module.

# Other AC Cord Options

## Country specific AC grounded line cords

Part Number	Description
50-16000-218R	AC Line Cord, 1.8M, grounded, three wire, NEMA 1-15P plug. Associated Country: Japan
23844-00-00R	AC line cord, 7.5 feet long, grounded, three wire. Associated Country: US

