



ZEBRA

PS20 Applications Guide

The ultimate personal shopper solution for customers and associates – all enhanced with a range of value add applications.



Zebra PS20 Personal Shopper

Consumer Shoppers get a more personalized shopping experience and Store Associates can do more with Zebra's PS20 Personal Shopping Solution

Zebra's PS20 Personal Shopping Solution allows customers to scan their own items as they shop, so they only have to pack their bags once and check out without a queue for a frictionless shopping experience. With deployments in over 4,000+ stores, Zebra is the inventor and leader in personal self-shopping solutions which are proven to increase revenue, reduce costs and provide a platform to enable next generation digital services.

- **Built-in scanner:** advanced scanning technology and PRZM Intelligent Imaging deliver lightning fast 1D/2D barcode capture
- **Rugged and long lasting:** get longer cycle times with a new higher capacity battery
- **Reliable connectivity:** for the most personalized service by delivering relevant coupons, discounts and fast shopping paths
- **Ease of use:** intuitive, easy-to-use interface thanks to the familiar Android operating system

A diverse range of partner applications are available to help you get more from the Zebra Personal Shopping Devices.



BudgetBox

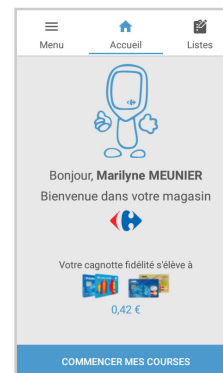
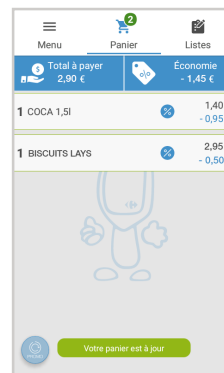
For consumers, Budgetbox's Scaneo application brings grocery shoppers the best of 'online' shopping offline. Scaneo generates customer loyalty thanks to a best-in-class shopping application that enhances the shopping experience. Customers could see an increase in sales of up to 15% thanks to the introduction of Scaneo in their stores. Scaneo is available for Zebra's PS20 allowing a scan & go customer experience.

www.budget-box.com

Regions Supported: EMEA

Key Features Supported

Self-Scan	Generic Promotions	Personalized Promotions	Location-specific Offers	Recipes	Shopping List Management	Wayfinder to an item	Anti-theft of device	EAS Tag Integration	Payment not via Regular POS/Checkout	Store Associate Use Cases
•	•	•	•	•	•	•		•	•	



Datema

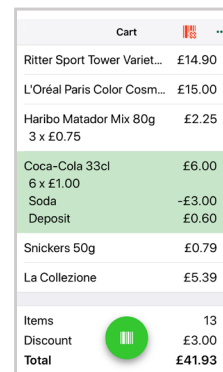
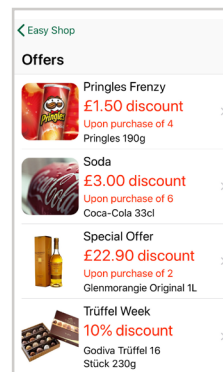
EasyShop is a complete self-scanning solution for retailers. EasyShop self-scanning increases customer loyalty by simplifying shopping as well as the decision-making process of various purchases, creating an enhanced shopping experience. With our self-scanning solution you have numerous possibilities of creating a truly all-in-one store-experience, from price-scanning to special offers, demos, knowledge and invitations to your customers.

www.datemaretail.com

Regions Supported: EMEA

Key Features Supported

Self-Scan	Generic Promotions	Personalized Promotions	Location-specific Offers	Recipes	Shopping List Management	Wayfinder to an item	Anti-theft of device	EAS Tag Integration	Payment not via Regular POS/Checkout	Store Associate Use Cases
•	•	•	•	•	•	•	•			•



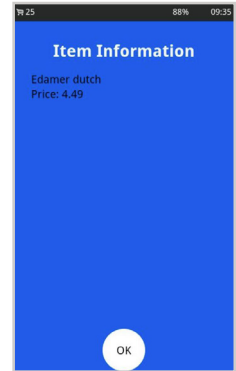
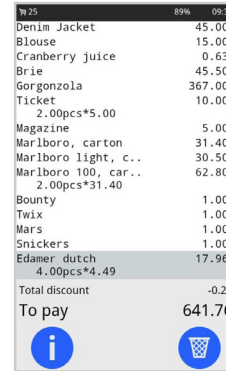
EXTENDA

Extenda

Comprised of four key parts, Extenda Retail SelfScan personal shopper solution lets retailers offer consumers convenience and unparalleled checkout speed, while enabling retailers to minimize losses in connection with self-scanning.

- Store server - handles the shopping baskets and evaluates if a re-scan needs to be performed.
- Central server - tasked with integrating customers from external systems and distributing them to the stores.
- App - a thin client that visualizes the shopping basket for the customer.
- APIs - allow retailers to build their own applications and use Extenda's business logic in the background.

www.extenda.com



Regions Supported: EMEA, APAC

Key Features Supported

Self-Scan	Generic Promotions	Personalized Promotions	Location-specific Offers	Recipes	Shopping List Management	Wayfinder to an item	Anti-theft of device	EAS Tag Integration	Payment not via Regular POS/Checkout	Store Associate Use Cases
•	•	•	•				•		•	



GK Software

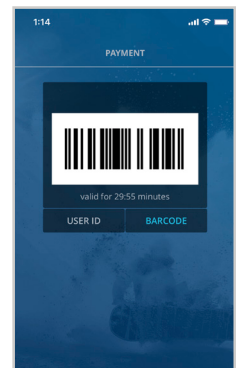
GK Personal Shopping Solution sends customized offers, corporate loyalty benefits, and enables self-scanning and payment-all from the convenience of a fully-brandable mobile app. It welcomes customers with personalized messages to their smartphone when they arrive at the store, and presents specialized coupons or vouchers on the PS20 based on their location.

www.gk-software.com

Regions Supported: NA, LA, EMEA, APAC

Key Features Supported

Self-Scan	Generic Promotions	Personalized Promotions	Location-specific Offers	Recipes	Shopping List Management	Wayfinder to an item	Anti-theft of device	EAS Tag Integration	Payment not via Regular POS/Checkout	Store Associate Use Cases
•	•	•	•	•	•				•	



RetAPPs SRL

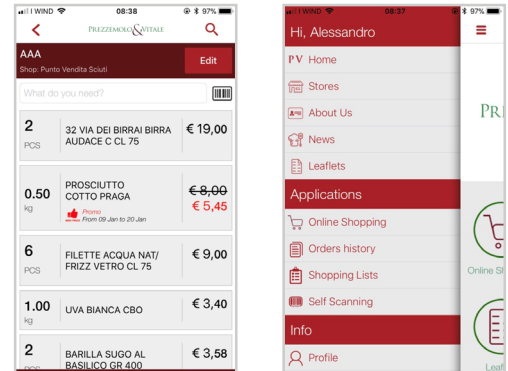
SmartBip is an innovative software platform that enables retailers to integrate, in a single application, services such as Mobile Self-Scanning, Mobile Payment, Shopping List Management, Select/Click & Collect and Mobile Promotions & Coupling. The Merchant-App allows retailers to manage PSS/MSS controls, POS operations, innovative payments, product picking and CRM customer management. SmartBip can also integrate automated lockers and self-service product distributors such as vending machines.

www.retapps.com

Regions Supported: EMEA

Key Features Supported

Self-Scan	Generic Promotions	Personalized Promotions	Location-specific Offers	Recipes	Shopping List Management	Wayfinder to an item	Anti-theft of device	EAS Tag Integration	Payment not via Regular POS/Checkout	Store Associate Use Cases
•	•	•	•	•	•	•			•	•



REVISION

Re-Vision

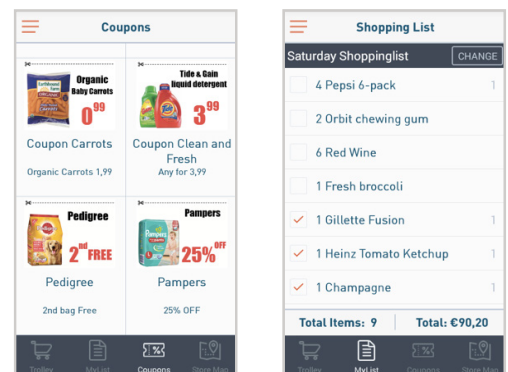
My-Scan™ self-scanning application enables retailers to proactively engage with their consumers through a variety of modules such as shopping lists, personalized coupons and promotions, mobile payment, extra product information, in-store navigation, queue-busting and more. With 1.5M daily shopping trips running through our backend, Re-Vision's My-Scan™ application has a proven track record of scalable and successful implementations at top tier retailers worldwide. My-Scan™ offers a flexible architecture and supports several types of devices providing retailers with increased revenue, customer satisfaction and basket size.

www.re-vision.com

Regions Supported: NA, LA, EMEA, APAC

Key Features Supported

Self-Scan	Generic Promotions	Personalized Promotions	Location-specific Offers	Recipes	Shopping List Management	Wayfinder to an item	Anti-theft of device	EAS Tag Integration	Payment not via Regular POS/Checkout	Store Associate Use Cases
•	•	•	•	•	•	•	•		•	•





Shopic, Inc.

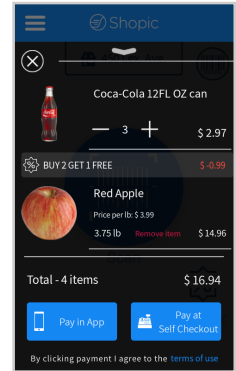
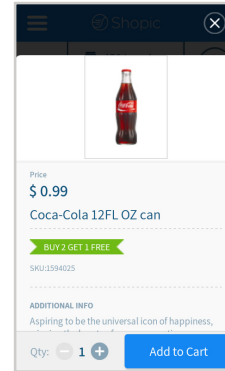
Scan & Buy is a revolutionary Mobile Self-Checkout solution with a pioneering technology called behavioral anomaly detection that flags irregular transactions and prevents shrinkage, making it the most secure solution available.

www.shopic.co

Regions Supported: NA, EMEA

Key Features Supported

Self-Scan	Generic Promotions	Personalized Promotions	Location-specific Offers	Recipes	Shopping List Management	Wayfinder to an item	Anti-theft of device	EAS Tag Integration	Payment not via Regular POS/Checkout	Store Associate Use Cases
•	•	•		•		•	•			



Supersmart

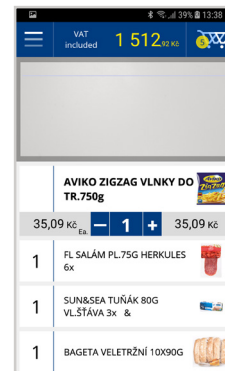
Supersmart is the easiest and fastest way to shop, enabling instant checkout of fully loaded carts in less than half a minute, bypassing tedious lines. Customers simply enter the store, take an item off the shelf, scan the item with our Supersmart app, place it in the cart, validate the cart instantly at the checkout station, pay and off they go.

www.supersmart.co.il

Regions Supported: NA, EMEA, APAC

Key Features Supported

Self-Scan	Generic Promotions	Personalized Promotions	Location-specific Offers	Recipes	Shopping List Management	Wayfinder to an item	Anti-theft of device	EAS Tag Integration	Payment not via Regular POS/Checkout	Store Associate Use Cases
•	•	•	•	•	•		•		•	•





Xarevision

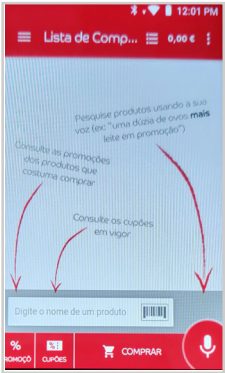
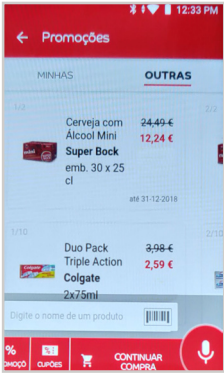
With xPedit shopping starts with speaking to a smartphone or virtual assistant (ex: Home, Alexa, etc.) for adding products to a shopping list and reviewing items and best deals, anytime and anywhere, then going to a store and using a personal self-scan device for collecting items, checking product location or promotions and finally being able to self-checkout, all with one single PSS device (Zebra's PS20), for a frictionless/queueless shopper experience. xPedit PSS devices also comprise auditing features and can also be used by store staff for picking of items related to online ordering/delivery.

www.xarevision.pt

Regions Supported: EMEA

Key Features Supported

Self-Scan	Generic Promotions	Personalized Promotions	Location-specific Offers	Recipes	Shopping List Management	Wayfinder to an item	Anti-theft of device	EAS Tag Integration	Payment not via Regular POS/Checkout	Store Associate Use Cases
	•	•	•		•		•	•		



NA and Corporate Headquarters
+1 800 423 0442
inquiry4@zebra.com

Asia-Pacific Headquarters
+65 6858 0722
contact.apac@zebra.com

EMEA Headquarters
zebra.com/locations
contact.emea@zebra.com

Latin America Headquarters
+1 847 955 2283
la.contactme@zebra.com