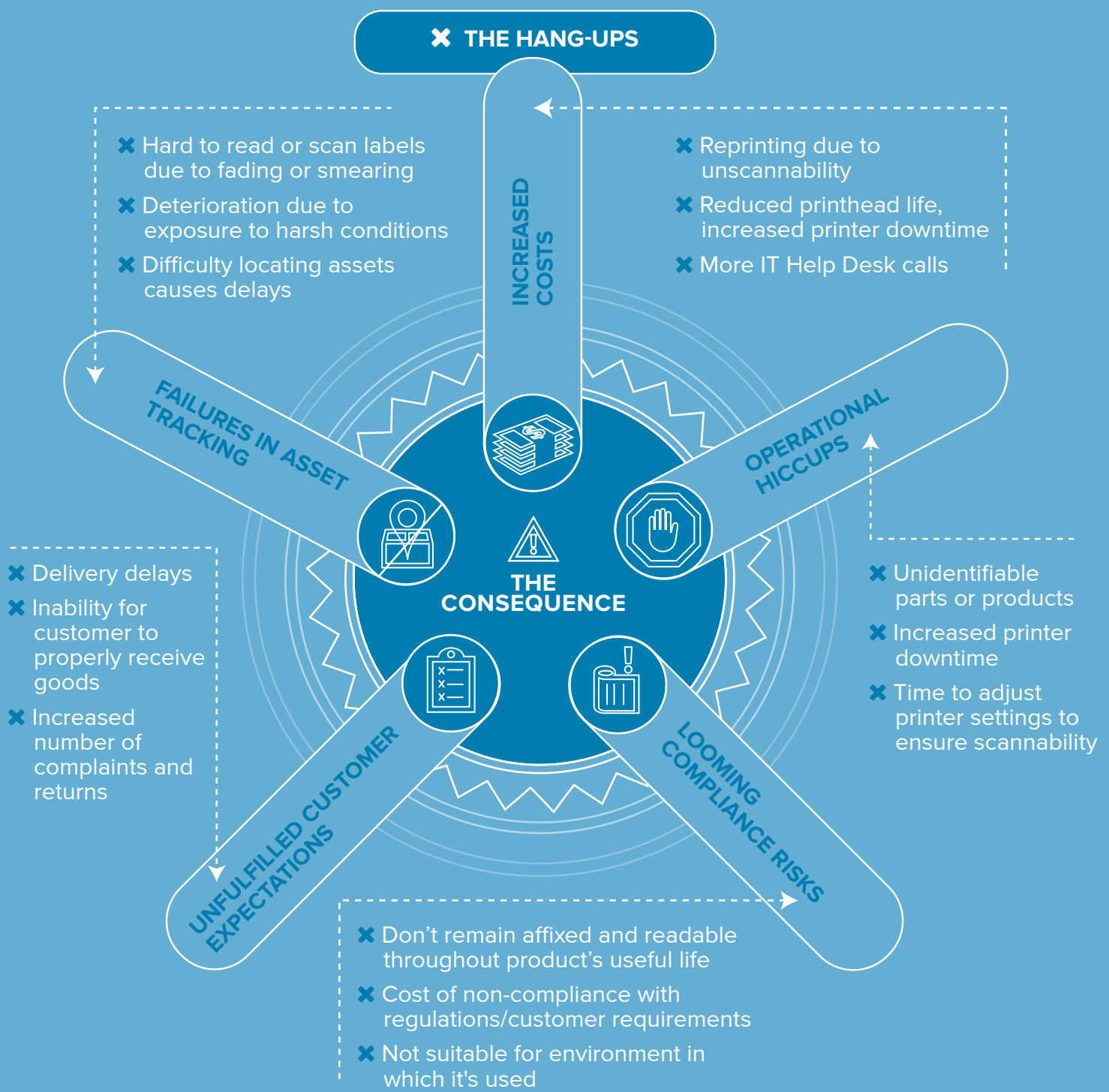


DO YOUR PRINTING SUPPLIES GIVE YOU OPERATIONAL HANG-UPS?

You've been there before: a label falls off, is hard to scan and cripples the printhead or chokes the printer. This ripple effect creates unnecessary bottlenecks, often with dire consequences.

CHOOSING THE WRONG PRINTING SUPPLIES

is almost as costly as operating without them.



PREVENT DISRUPTIONS THAT INTERRUPT PRODUCT FLOW

The right label for the right application keeps your operation running smoothly.

PARTS MANAGEMENT

- ✓ Receipt of parts
- ✓ Inventory management

EQUIPMENT MAINTENANCE

- ✓ Maintenance schedule

ORDER FULFILLMENT

- ✓ Order picking and staging
- ✓ Shipping

FIELD OPERATIONS

- ✓ Delivery and sales
- ✓ Services

PRODUCT DEVELOPMENT

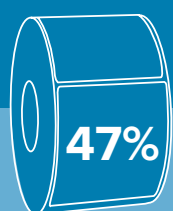
- ✓ Product identification labels
- ✓ Compliance labels

PRODUCTION

- ✓ Work-in-process and product identification
- ✓ Packaging and quality assurance

FINISHED GOODS

- ✓ Case labels
- ✓ Inventory management



47% of manufacturers experience costly downtime due to labeling disruptions.¹

AVOID FEEDING YOUR SUPERIOR QUALITY PRINTER INFERIOR SUPPLIES

ZEBRA CERTIFIED SUPPLIES FOR MANUFACTURING

Consistently Exceptional and Exceptionally Consistent

CONSISTENTLY OUTSTANDING QUALITY

Reliable output for reliable outcomes

EXCEPTIONAL SERVICE

Just-in-time delivery

UNMATCHED EXPERTISE

Deep knowledge of printers and supplies

END PRINTER SUPPLY HANG-UPS

Product labels are the last link between you and your customers, consumers and regulators. Get it right with the right supplies—learn how at www.zebra.com/supplies

AND DRIVE PROFITABILITY UP

Source:

1. "How labeling can help manufacturers compete in the global marketplace," Bob Brown, Global Manufacturing, Jan. 16, 2017

©2018 ZIH Corp and/or its affiliates. All rights reserved. Zebra and the stylized Zebra head are trademarks of ZIH Corp, registered in many jurisdictions worldwide. All other trademarks are the property of their respective owners.