

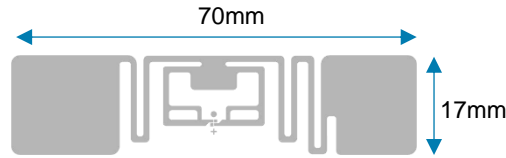


ZEBRA

Boingtech BT754 Inlay

Features

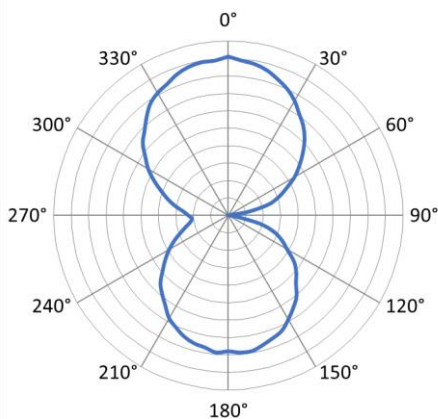
- Ideal for high memory 3” labelling applications
- Applications: Case / item tracking
- Pre-tested with Zebra printers and readers
- Global item – works with FCC and ETSI frequencies



Technical Specification

- IC: Monza 4E
- Read Sensitivity: -19.5dBm
- Write Sensitivity: -16.7dBm
- EPC Memory: 496 bit
- User Memory: 128 bit
- TID: 96 bit factory locked
- EPC Gen2v2
- Operating Temperature: -40°C to 85°C

Radiation Pattern



*Theoretical read range and orientation data is for guidance only. Actual performance will depend on your application and environment. Testing is recommended.

*Theoretical Read Range (m)

Material	ETSI (865-868 MHz)	FCC (902-928 MHz)
Air	9	10
Cardboard	11	9
Fiberglass	5	8
Glass	5	5
PTFE	9	8
Polyacetyl	6	8
PVC	7	8
Rubber	4	5

SUGGESTED APPLICATIONS

- RFID labeling



- Case/pallet labeling



- Transportation & Logistics



- Warehouse labeling



Testing and Compliance

All inlays certified by Zebra have been pre-tested with Zebra printers and readers

Material Testing in End Application

The information contained in this document is to be used for guidance only and is not intended for use in setting specifications. All purchasers of Zebra products shall be solely responsible for independently determining the product conforms to all requirements of their unique application.

For more information, visit www.zebra.com/rfidlabels

Product Performance and Suitability: The information contained in this document is to be used for guidance only and is not intended for use in setting specifications. All purchasers of Zebra products shall be solely responsible for independently determining if the product conforms to all requirements of their unique application.

NA and Corporate Headquarters | +1 800 423 0442 | inquiry4@zebra.com

©2016 ZIH Corp and/or its affiliates. All rights reserved. ZEBRA and the stylized Zebra head are trademarks of ZIH Corp, registered in many jurisdictions worldwide. All other trademarks are the property of their respective owners.

09/2016