

Zebra SmartPack™

Powered by Zebra Savanna™

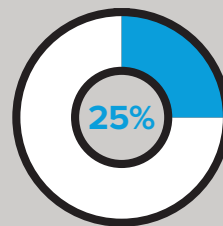
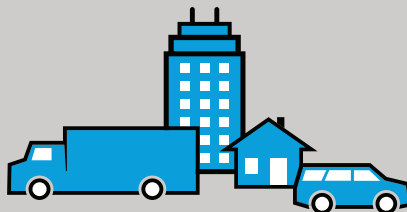


Driving efficiency and the green agenda in transportation



Transport represents almost a quarter of Europe's greenhouse gas emissions and is the main cause of air pollution in cities

By 2050 Europe aims to be the world's first climate-neutral continent

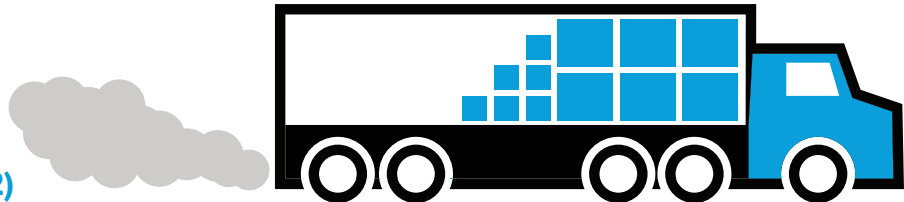


Heavy duty transport is responsible for about a quarter of CO2 emissions...

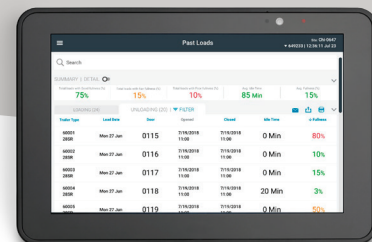
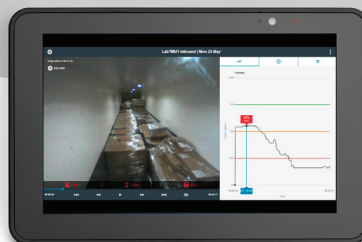
...and is continuing to rise



The first-ever EU-wide CO2 emission standards for heavy duty vehicles was introduced in 2019 (Regulation (EU) 2019/1242)



Zebra's SmartPack™ Trailer solution has been designed to help you see your loading operations from a new perspective. Imagine if you could report on the fullness of your trailers across your entire fleet. Not only helping you to comply with the widening emissions regulations, but to also promote the operational 'eco-efficiency' of your supply chain. Now, you can get that visionary visibility with Zebra's SmartPack™ trailer – a landmark load planning solution providing transportation and logistics customers with real-time operational visibility into their loading operations.



To find out more please visit www.zebra.com/smartpack or email us at contact.emea@zebra.com for more information.



ZEBRA and the stylized Zebra head are trademarks of Zebra Technologies Corp., registered in many jurisdictions worldwide. All other trademarks are the property of their respective owners. ©2020 Zebra Technologies Corp. and/or its affiliates. All rights reserved. 06/2020

Source: https://ec.europa.eu/clima/policies/transport/vehicles/heavy_en