



ZEBRA HEALTHCARE TECHNOLOGY SOLUTIONS

Zebra has provided more than 45 years of technology expertise, leadership and innovation. Its healthcare solutions are designed and tested for the healthcare environment to help you reach new levels of efficiency, accuracy and patient safety.

- Identify, track and manage critical assets, people and activity. Giving you real-time visibility into patient records, specimens, medications, equipment and staff whereabouts, from the time your patient is admitted to the time you sign their discharge.



PATIENT IDENTITY MANAGEMENT

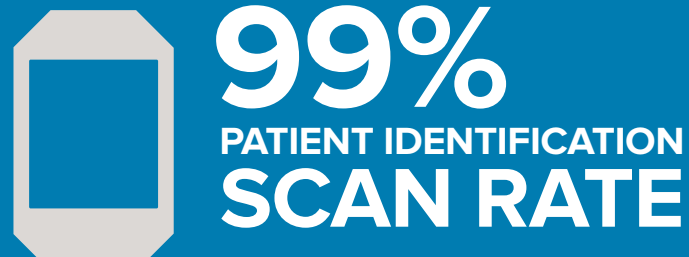
From admissions to discharge and throughout the patient journey, safety starts with positive patient identification. Zebra Identity Solutions enable accurate specimen collection and management, medication administration and patient identification, helping you improve patient safety and protect patient rights.

HEALTHCARE MOBILITY

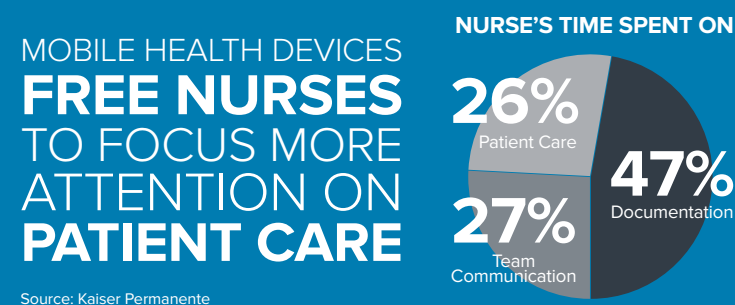
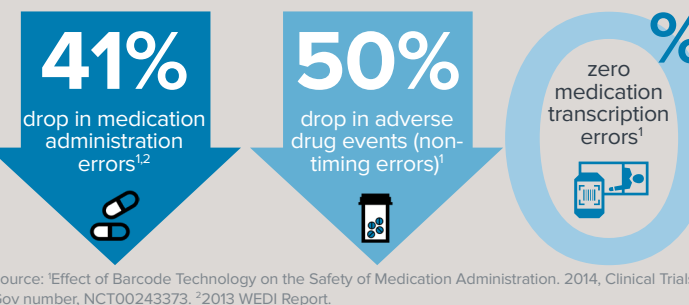
Enhancing communication and collaboration across your facility enables more time to focus on patient care. Through Zebra's Healthcare Mobility solutions we are able to help you to simplify workflows, improve communications and increase operational effectiveness.

INTELLIGENCE & ANALYTICS

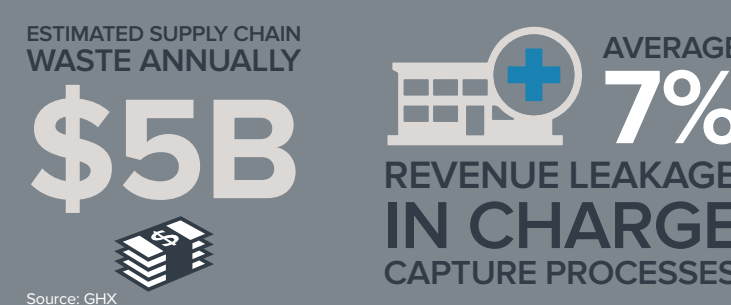
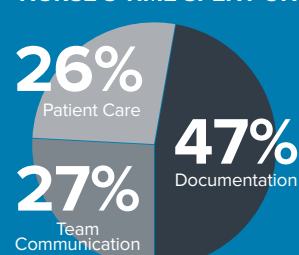
Zebra's visionary products, software and real-time location solutions not only make patient care smarter and more connected than ever, they also reduce waste and lower costs. Visibility into the location and health of patients, staff and each critical asset provides the difference between guessing and knowing, ensuring caregivers make intelligent decisions and act with confidence.



BETTER CONNECTIONS.
BETTER CARE.
THE SMART CONNECTED HOSPITAL



NURSE'S TIME SPENT ON



FOR MORE INFORMATION ABOUT HOW YOU
CAN ENHANCE PATIENT CARE, INCREASE
OPERATIONAL EFFICIENCY AND OPTIMISE
IT OPERATIONS USING ZEBRA'S SOLUTIONS,
VISIT WWW.ZEBRA.COM/HEALTHCARE

WHY ZEBRA?

Zebra Technologies builds tracking technology and identity solutions that generate actionable information and insight, giving companies unprecedented visibility into their businesses by giving physical things a digital voice.

Zebra is helping healthcare organisations maximise patient centric care through operational visibility, providing more cost-effective technology-driven solutions that enhance patient safety and clinical accuracy, improve staff productivity and maximise operational efficiency.

Zebra is a GS1 Healthcare Partner with over 45 years of market leading expertise in barcode printing, mobile computing and barcode data capture technology solutions.

For more information visit www.zebra.com/healthcare

ZEBRA ENDORSEMENTS

"Zebra is the only Vendor that has it all: The printers, the scanners, motion and sensing technologies, IoT platform - there is no other vendor positioned like you in HC!"

CENTRAL MANCHESTER TRUST, NHS

"With the new technology you can open the application, type the patient's name and select the primary nurse that is attached to the patient to make the call. It goes directly to the nurse that is with the patient."

RACHEL GEORGE,
MANAGER OF NURSING INFORMATICS
(PARKLAND HEALTH CASE STUDY)

"We now have a reliable, high-performance system in place, which allows our staff to locate our resources quickly and accurately. Their feedback during the pilot has been excellent. We are looking forward to exploring many more uses of the RFID system as the roll out continues."

LARS G. KNUDSEN, CIO, DET NYE UNIVERSITETS-HOSPITAL I AARHUS (DNU)
AARHUSUNIVERSITY HOSPITAL CASE STUDY)



SCAN4SAFETY
Patient. Product. Place. Process.



NA and Corporate Headquarters
+1 800 423 0442
inquiry4@zebra.com

Asia-Pacific Headquarters
+65 6858 0722
contact.apac@zebra.com

EMEA Headquarters
zebra.com/locations
contact.emea@zebra.com

Latin America Headquarters
+1 847 955 2283
la.contactme@zebra.com

©2018 ZIH Corp. All rights reserved. Zebra and the stylized Zebra head are trademarks of ZIH Corp., registered in many jurisdictions worldwide. All other trademarks are the property of their respective owners. 07/2018

PATIENT IDENTITY MANAGEMENT

Z-BAND ULTRASOFT

Patient ID, the ultimate softest wristband on the market



ZD510-HC Wristband Printer

Most popular, easy to use, on demand wristband printer. Especially designed with nurses needs in mind. Disinfectant ready. Typical applications: Admissions, patient ID and allergy alerts for adults and children.



ZD410-HC™ Desktop Printer

Designed for hospital, clinic, laboratory and pharmacy applications. Disinfectant ready plastics and an IEC 60601-1 compliant power supply. Ideal for workstations-on-wheels for bedside specimen labelling.



DS8100-HC Scanner

Premium handheld medical scanner, purpose-built for healthcare environments. Unparalleled performance on virtually every barcode in any condition. Maximum protection against the spread of bacteria.



DS4308-HC Scanner

Accurately capture virtually any barcode, on any medium, in any condition. 1D or 2D, electronic or printed on paper labels, tiny dense codes on the curved surface of a vial, codes printed on reflective surfaces like IV bags, codes under shrink wrap on medication and even smudged, scratched or poorly printed barcodes. Disinfectant ready.



CS4070-HC Wireless Scanner

Compact 1d and 2d cordless barcode scanner designed for the Healthcare environment. 12 hours battery life. Disinfectant ready.



TC51-HC Mobile Computer

Rapid access to essential data and clear communication at critical moments. Pocket-sized device with familiar Android operating system. Enterprise class scanning. Large touch display and versatile voice communication and alerts. Disinfectant ready.



ZD510-HC Cartridge Wristbands

User-friendly, hassle-free printing with easy-to-load wristband cartridges. Wide variety of wristband sizes, materials and colours with antimicrobial coating.



Z-Band Range Wristbands

Direct thermal, ribbon-less printing for superior ease-of-use. Wide range of materials designed to cover a range of patient concerns and hospital stays. Antimicrobial coating helps prevent the spread of common hospital infections.



HEALTHCARE MOBILITY

Z-SELECT™

Paper labels for case-note and sample labelling



TC51-HC Mobile Computer

Rapid access to essential data and clear communication at critical moments. Pocket-sized device with familiar Android operating system. Enterprise class scanning. Large touch display and versatile voice communication and alerts. Disinfectant ready.



ZD420-HC™ Desktop Printer

Innovative ribbon cartridge that can be loaded in seconds. Disinfectant ready plastics and an IEC 60601-1 compliant power supply. Ideal for lab and specimen labels, asset, medication, blood and IV bag labels.



ZQ600-HC Series Mobile Printers

Small, robust and easy to use, light-weight mobile printer. Ideal for bedside specimen and blood tube labelling. Disinfectant ready. Powerful battery with Power SmartPrint technology.



ET55 Tablet

Designed for continuous reliable operation. Enables mobile access to clinical information. Ideal for mobile nurse or doctor.



DS4308-HC Scanner

Accurately capture virtually any barcode, on any medium, in any condition. 1D or 2D, electronic or printed on paper labels, tiny dense codes on the curved surface of a vial, codes printed on reflective surfaces like IV bags, codes under shrink wrap on medication and even smudged, scratched or poorly printed barcodes. Disinfectant ready.



DS8100-HC Scanner

Premium handheld medical scanner, purpose-built for healthcare environments. Unparalleled performance on virtually every barcode in any condition. Maximum protection against the spread of bacteria.



CS4070-HC Wireless Scanner

Compact 1d and 2d cordless barcode scanner designed for the Healthcare environment. 12 hours battery life. Disinfectant ready.



Z-Select™ Labels and Tags

Premium quality paper with excellent print quality and a permanent adhesive. Wide temperature range, down to -40C. Ideal to be used with mobile or desktop printers for specimen labelling and pharmacy labels.



INTELLIGENCE AND ANALYTICS

Z-ULTIMATE®

Identification of equipment and surgical instruments



ZD500R RFID Printer

Utilising UHF RFID printing and encoding to provide additional visibility and tracking improvements to more traditional barcode labelling applications in Healthcare. Inventory, assets and equipment across the hospital.



ZD620-HC™ Desktop Printer

Direct thermal and thermal transfer models. Designed for healthcare with disinfectant-ready plastics, sealed button interface and healthcare compliant power supply. Ideal for lab and specimen labels, asset, medication, blood and IV bag labels.



ZT230 Industrial Printer

Reliable printing, suited for barcode-labelling applications that require more frequent label change, for orders, specimen labelling and asset tracking.



DS8100-HC Scanner

Premium handheld medical scanner, purpose-built for healthcare environments. Unparalleled performance on virtually every barcode in any condition. Maximum protection against the spread of bacteria.



DS4308-HC Scanner

Accurately capture virtually any barcode, on any medium, in any condition. 1D or 2D, electronic or printed on paper labels, tiny dense codes on the curved surface of a vial, codes printed on reflective surfaces like IV bags, codes under shrink wrap on medication and even smudged, scratched or poorly printed barcodes. Disinfectant ready.



CS4070-HC Wireless Scanner

Compact 1d and 2d cordless barcode scanner designed for the Healthcare environment. 12 hours battery life. Disinfectant ready.



RFID8500 with MC40-HC

RFID and 1D/2D barcode scanning paired with the MC40-HC. Asset and inventory management.



Z-Select™ Labels and Tags

Premium quality paper with excellent print quality and a permanent adhesive. Wide temperature range, down to -40C. Ideal to be used with mobile or desktop printers for specimen labelling and pharmacy labels.



Z-Ultimate™ Labels and Tags

Gloss white polyester with a permanent adhesive which withstands chemicals and high temperatures. Adhesive performs between -40C and +150C; resists autoclave temperatures; offers excellent chemical resistance. Ideal for identification of equipment and surgical instruments requiring sterilisation.



SCAN4SAFETY

Patient. Product. Place. Process.

The Scan4Safety initiative is helping UK NHS trusts transform standards of care and improve patient safety by adopting GS1 and PEPPOL barcoding standards.

Using standardised barcodes to identify patient, product, place and process has the potential to save lives, improve accuracy and operational efficiency.

Early results from 6 pilot projects show Scan4Safety has the potential to save lives and save up to £1 billion for the NHS over 7 years.

Similar to those systems used in shops by retailers, the introduction of bar-coding standards will help us to better identify and match our patients, products, and locations.

From better patient safety and experience, to improved operational efficiency, the benefits are clear.

Source: www.scan4safety.nhs.uk

HEALTHCARE FEATURE SETS



Disinfectant Ready

Zebra's Healthcare plastics are compliant with your infection control regimes. They resist the effects from most of the harmful chemicals used for cleaning in the Healthcare environment.



Healthcare ZD510-HC Printer Power Supplies

The Zebra ZD510-HC wristband printer, and the ZD410, ZD420 and ZD620-HC desktop printers are provided with IEC 60601-1 compliant power supplies. Ensuring additional electrical safety and allowing them to be used with other medical devices and equipment in critical areas.



2D GS1 Compliance

The use of GS1 standards in healthcare increases patient safety, drives supply chain efficiencies and improves the traceability of medicines and medical devices. Ensuring GS1 compliance is key to the future of your healthcare business. Zebra Technologies is a Global GS1 healthcare partner.



Healthcare Printer Consumables

Zebra develops and manufactures labels and wristbands specifically for healthcare applications. All of our labels and ribbons are laboratory-tested for optimum performance in tough environments; allowing them to be used in a wide range of clinical environments. Speciality features include: wide variety of wristband sizes, materials and colours with antimicrobial coating, labels and tags with wide temperature range between -40C and +150C. They conform to the Clinical and Laboratory Standards Institute CLSI and International Society of Blood Transfusion ISBT.

ENTERPRISE TOOLS & FEATURE SETS

