



## SUMMARY

### Customer



Green Logistics Groningen

### Partner



ScanSolutions B.V.

### Industry

Transport & Logistics

### Challenge

Green Logistics Groningen wanted an optimal, intuitive and flexible warehouse management solution to manage its order and returns processes for its wide and constantly changing product range; it was looking to work with a sole hardware provider

### Solution

- Zebra WT6000 Wearable Computers
- Zebra RS6000 Bluetooth Ring Scanners
- Zebra ET50 Tablet Computers
- Zebra MC3300 Handheld Mobile Computers
- Zebra DS4308 Handheld Scanners
- Zebra ZT510 and 105SL Industrial Printers
- Zebra Mobility DNA
- Zebra StageNow Android Device Staging
- Zebra Enterprise Home Screen
- Tailor-made version of ScanSolutions Arox WMS

### Results

- Zebra Technologies is the sole hardware supplier in the Green Logistics warehouse
- The Android-based WMS from Zebra and ScanSolutions is reliable, intuitive and very easy to use, with minimal training needed, especially important for temporary staff, user feedback is excellent
- Moving to an Android platform and specifically with the extensive portfolio of Zebra Android tools ensures a future-proof solution for Green Logistics
- Reliable hands-free systems are saving time and increasing productivity and efficiency
- Green Logistics – and its customers – now have complete visibility over the logistics process
- The system is totally scalable to meet growth and seasonal demands, making it tailor-made for them
- Green Logistics has benefitted from substantial cost savings, as automation has enabled it to reduce the numbers of employees dedicated to goods receipt, returns and order processing by 50% and to redeploy these employees within the business
- Increased accuracy in order picking, expected by customers and resulting in excellent levels of customer service and subsequent customer loyalty

# Zebra Technologies And Partner ScanSolutions Collaborate To Provide Total Optimal Warehouse Management Solution For Dutch Logistics Company

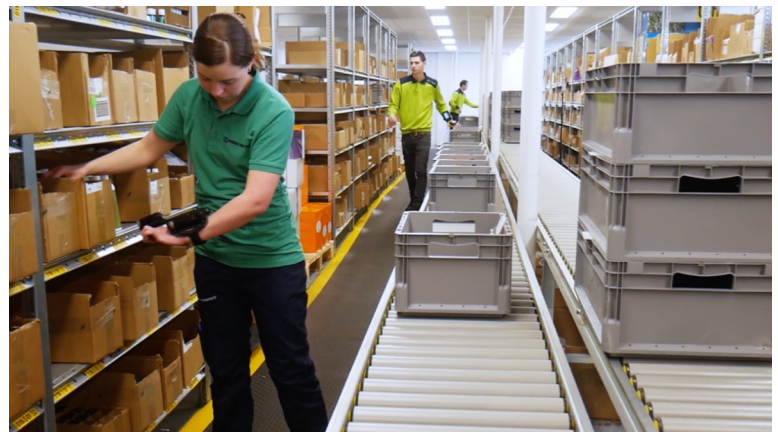
Green Logistics Groningen is a logistics company based in Aduard, just outside the city of Groningen in the Netherlands, which distributes products across Europe. It currently has 72 customers, the majority being large American manufacturers. Its constantly changing range includes thousands of high-quality, exclusive products in top market tiers

## Challenge

Online sales in Europe are expected to grow to 621 billion euros in 2019.\* And customer demands are also steadily on the rise. Customers expect constant updates on their order status, which means logistics companies, like Green Logistics, need to provide excellence and visibility across the entire order process. Green Logistics has further challenges: its huge product range is constantly changing, so is customer shopping behaviour, and it delivers across Europe. Therefore, Green Logistics needed an adaptable, scalable, user-friendly and reliable order fulfilment system to ensure an excellent customer and end-user experience.

## Solution

Green Logistics Groningen selected a total hardware and software package from Zebra Technologies and ScanSolutions. Danny Berg explains the choice: “Having Zebra as our sole hardware supplier and the bespoke, scalable Arox WMS software from ScanSolutions guarantees continuity for us. We can now control every aspect of the logistics process, from pallet delivery to the customer’s door. That allows us to be truly customer-focused.” And, in turn, Arno Bruining, founder and CEO of ScanSolutions, a Zebra Business Partner, explains why ScanSolutions always recommends Zebra Technologies products: “We chose to partner with Zebra because they offer the best total product range for scanning and printing hardware within the industry. That means scanners, printers, PDAs, the list goes on. And each and every one is a high-quality product.”





On receipt of an order, Zebra Industrial Printers are used to print order lists: the picking list and the shipping label relevant to each individual carrier. ScanSolutions software uses customer parameters, set on country-specific delivery performance, to determine which carrier should deliver which package. Packages are sent along roller conveyors within the warehouse, passing through various zones, each manned by an employee. Pickers use the handheld scanner or ring scanners in conjunction with the wearable computers to scan, pick and check the products, the packing slips and the packing box, adding items as they work. The software performs automated checks at each scan, designed to keep errors to a minimum. End packers all have Zebra ET50 tablets too, which they use to run a final check on the orders and where they can immediately see if the package needs extra labels, because it contains hazardous substances or fragile goods, for example. After a final scan, an employee puts the package on the right carrier's pallet, ready for shipment. Customers have full visibility over their orders, being able to see when they were picked, when dispatched and ETD, all via Green Logistics' Customer Portal, which is constantly synching with Arox. To manage incoming goods and returns, meanwhile, warehouse staff use the Zebra MC3300 Handheld Mobile Computers, followed by the WT6000s and RS6000s for hands-free stock put-away.

Green Logistics uses a range of tools from the Zebra Android toolkit, including Zebra Mobility DNA for easier integration, management and troubleshooting and Zebra StageNow for staging the devices. It also runs Zebra Enterprise Home Screen, to quickly and simply define which applications can run on which device.

## Results

Arno Bruining was brought up in a transport company, and so has a deep love and understanding of the logistics sector and the need to adapt solutions to each individual customer; ScanSolutions software is always custom-made for each client. The tailor-made version of Arox has grown and adapted with Green Logistics, as its business has developed and grown. This has ensured continuity and cost-savings. Moreover, Green Logistics customers are high-end customers and expect that extra level of service and exceptional accuracy that the ScanSolutions–Zebra system can deliver. Arno Bruining summarises: “Zebra is a high-end brand in its sector too, so it sits very comfortably with Green Logistics. Its products are perfectly suited and designed with the warehouse environment in mind. And such an extensive high-performance, easy-to-use, reliable Android portfolio makes Zebra the obvious hardware partner for future-proof warehouse solutions.”

“For us, excellence means total control over every aspect of the ordering process: from the moment we receive the order until the moment the package is delivered. We can monitor the location of each package and are, therefore, able to give our most valued customers extra service and priority. The Zebra hardware is intuitive. The familiarisation period is short, which means we can easily scale up during busy periods. For each order the system knows the size of the products and, therefore, also the size of the shipping box. The ScanSolutions software enables us to recognise problems before the customer experiences them. At the end of the day, the most important thing for us is to deliver on our promises: for everyone involved in the process.”

**Danny Berg,**  
Warehouse Manager,  
Green Logistics

**For more information,  
please visit: [www.zebra.com](http://www.zebra.com)**



EMEA Headquarters  
[zebra.com/locations](http://zebra.com/locations)  
[contact.emea@zebra.com](mailto:contact.emea@zebra.com)

ZEBRA and the stylized Zebra head are trademarks of ZIH Corp., registered in many jurisdictions worldwide. All other trademarks are the property of their respective owners. ©2019 ZIH Corp. and/or its affiliates. All rights reserved. 07/2019